

BD Rhapsody™ System

VDJ CDR3, Sample Tag, and BD® AbSeq Library Preparation Protocol

For Research Use Only

23-22204-01
5/2020



Becton, Dickinson and Company
BD Biosciences
2350 Qume Drive
San Jose, CA 95131 USA

bdbiosciences.com
scomix@bdscomix.bd.com

Copyrights

© 2020, Becton, Dickinson and Company. All rights reserved. No part of this publication may be reproduced, transmitted, transcribed, stored in retrieval systems, or translated into any language or computer language, in any form or by any means: electronic, mechanical, magnetic, optical, chemical, manual, or otherwise, without prior written permission from BD Biosciences.

The information in this document is subject to change without notice. BD Biosciences reserves the right to change its products and services at any time to incorporate the latest technological developments. Although this guide has been prepared with every precaution to ensure accuracy, BD Biosciences assumes no liability for any errors or omissions, nor for any damages resulting from the application or use of this information. BD Biosciences welcomes customer input on corrections and suggestions for improvement.

Trademarks

BD, the BD Logo and Rhapsody are trademarks of Becton, Dickinson and Company or its affiliates. All other trademarks are the property of their respective owners. © 2020 BD. All rights reserved.

Regulatory Information

For Research Use Only. Not for use in diagnostic or therapeutic procedures.

History

Revision	Date	Change made
23-22204-00	1/2020	Initial release
23-22204-01	5/2020	Additional purification of final TCR and BCR index PCR products

Contents

Introduction	5
Required and recommended materials	5
Required reagents	5
Recommended consumables	6
Equipment	6
Best practices	7
Additional documentation	7
Safety information	7
Procedure	7
Preparing BD Rhapsody™ Cell Capture Beads for VDJ library amplification	8
cDNA synthesis and template switching	8
Denaturation and self-hybridization	9
Klenow extension	10
Treating the sample with Exonuclease I	11
Targeted mRNA, TCR, BCR, BD AbSeq, and Sample Tag library preparation	12
Required materials	12
Before you begin	15
Performing PCR1	15
Purifying PCR1 products by double-sided size selection	17
Separating BD AbSeq and Sample Tag PCR1 products from targeted mRNA, TCR, and BCR PCR1 products	18
Purifying targeted mRNA, TCR, and BCR PCR1 products	18
Purifying BD AbSeq/Sample Tag PCR1 products	19
Quantifying BD AbSeq/Sample Tag PCR1 products	20
Performing PCR2 on the targeted mRNA, TCR, BCR, and Sample Tag PCR1 products	21
Purifying targeted mRNA, TCR, BCR, and Sample Tag PCR2 products	23
Performing index PCR to prepare final libraries	26
Purifying index PCR products	27
Performing quality control on the final sequencing libraries	29
Sequencing	31
Requirements	31
Recommendations	32
Sequencing amount for targeted mRNA and VDJ libraries	32
Sequencing amount for BD AbSeq libraries	32

Sequencing amount for Sample Tag libraries	32
Sequencing flowcell loading and PhiX concentrations	33

Introduction

This protocol provides instructions on creating single-cell mRNA, Sample Tag, and BD Abseq libraries with the BD Rhapsody™ Single-Cell Analysis System or the BD Rhapsody™ Express Single-Cell Analysis System for sequencing on Illumina® sequencers. It is also intended to provide a method to enable a high-throughput detection of VDJ recombination events by generating sequencer-ready libraries specific to the CDR3-specific antigen binding regions of B and T cells. To create the library, cDNA of gene targets are encoded on Cell Capture Beads. This targeted library approach employs a two-step nested amplification, followed by an index PCR step. The generated library can be sequenced on various Illumina sequencers.

IMPORTANT The protocol described herein has not been thoroughly tested or optimized and is provided as is and without warranty. Any use of this protocol is at the risk of the user. BD Biosciences reserves the right to change specifications at any time. Information in the protocol is subject to change without notice. BD Biosciences assumes no responsibility for any errors or omissions. In no event shall BD Biosciences be liable for any damages in connection with or arising from the use of this protocol.

Required and recommended materials

Required reagents

Store the reagents at the storage temperature specified on the label.

Material	Supplier	Catalog No.
BD Rhapsody™ Targeted mRNA and AbSeq Amplification Kit	BD Biosciences	633774
Agencourt® AMPure® XP magnetic beads	Beckman Coulter	A63880
100% ethyl alcohol	Major supplier	–
10 mM Tris-HCl with 0.05% Tween® 20, pH 8.0 (Tris-Tween 20)	Teknova	T1485
Nuclease-free water	Major Supplier	–
Template switch oligo, TSO (5' T TTT TTT TTT TTT TTT TTT TTT rG rG rG 3'). Stock concentration of TSO is 100 µM in 10 mM Tris, 0.1 mM EDTA, pH 8.0	Major Supplier	
Klenow Fragment (3' -> 5' exo-) (includes NEBuffer 2)	New England Biolabs	M0212L
10 mM dNTP	New England Biolabs	N0447L
1 M MgCl ₂	Major Supplier	–
1 M Tris-HCl, pH 8.0 (diluted to 50 mM Tris-HCl for the assay)	Major Supplier	–

Recommended consumables

Material	Supplier	Catalog No.
Pipettes (P10, P20, P200, P1000)	Major Supplier	–
Low-retention, filtered pipette tips	Major Supplier	–
0.2-mL PCR 8-strip tubes	Major Supplier	–
15-mL conical tube	Major Supplier	–
DNA LoBind Tubes, 1.5 mL	Eppendorf	0030108051
DNA LoBind Tubes, 5.0 mL	Eppendorf	0030108310
Qubit™ Assay Tubes	Thermo Fisher Scientific	Q32856

Equipment

Material	Supplier	Catalog No.
Microcentrifuge for 1.5–2.0-mL tubes	Major Supplier	–
Microcentrifuge for 0.2-mL tubes	Major Supplier	–
Vortexer	Major Supplier	–
Digital timer	Major Supplier	–
Heat block	Major Supplier	–
Eppendorf ThermoMixer® C	Eppendorf	5382000023
SmartBlock Thermoblock 1.5 mL to fit on the ThermoMixer® C	Eppendorf	5360000038
6-tube magnetic separation rack for 1.5-mL tubes	New England Biolabs	S1506S
Low-profile magnetic separation stand for 0.2 mL, 8-strip tubes	V&P Scientific, Inc.	VP772F4-1
Qubit™ 3.0 Fluorometer	Thermo Fisher Scientific	Q33216
Agilent® 2100 Bioanalyzer Or, Agilent® 4200 TapeStation System	Agilent Technologies Agilent Technologies	G2940CA G2991AA

Best practices

- Use low-retention filtered pipette tips.
- When working with BD Rhapsody Cell Capture Beads, use low-retention filtered tips and LoBind tubes. **Never vortex the beads. Pipet-mix only.**
- Bring AMPure XP magnetic beads to room temperature before use.
- Remove supernatants without disturbing AMPure XP magnetic beads.

Additional documentation

- *BD Rhapsody™ Single-Cell Analysis System Instrument User Guide* (Doc ID 214062)
- *BD Rhapsody™ Express Single-Cell Analysis System Instrument User Guide* (Doc ID 214063)

Safety information

For safety information, see the *BD Rhapsody™ Single-Cell Analysis System Instrument User Guide* (Doc ID: 214062) or the *BD Rhapsody™ Express Single-Cell Analysis System Instrument User Guide* (Doc ID: 214063).

Procedure

Perform the experiment on the BD Rhapsody™ Single-Cell Analysis system following either the:

- *BD Rhapsody™ Single-Cell Analysis System Instrument User Guide* (Doc ID: 214062)

STOP after the section “Washing the Cell Capture Beads” and follow this protocol from [Preparing BD Rhapsody™ Cell Capture Beads for VDJ library amplification](#) and subsequent steps.

Or,

- *BD Rhapsody™ Express Single-Cell Analysis System Instrument User Guide* (Doc ID: 214063)

STOP after the section “Washing the Cell Capture Beads” and follow this protocol from [Preparing BD Rhapsody™ Cell Capture Beads for VDJ library amplification](#) and subsequent steps.

Ensure that the intended total cell load is between 1,000–10,000 single cells for this protocol. Cell load below or above this recommended range may not be suitable for current protocol configuration. Then proceed as described in the following procedure.

Preparing BD Rhapsody™ Cell Capture Beads for VDJ library amplification

cDNA synthesis and template switching

Thaw reagents (except for the enzymes) in the BD Rhapsody cDNA Kit (Cat. No. 633773) at room temperature (15°C to 25°C). Keep enzymes at –25°C to –15°C.

NOTE Perform this procedure in the pre-amplification workspace.

- 1 Set a thermomixer to 42°C.
- 2 In a new 1.5-mL LoBind tube, pipet the following reagents.

cDNA/Template switching mix

Component	For 1 library (µL)	For 1 library with 20% overage (µL)
RT Buffer	40	48
dNTP	20	24
RT 0.1 M DTT	10	12
Bead RT/PCR Enhancer	12	14.4
RNase Inhibitor	10	12
Reverse Transcriptase	10	12
Nuclease-free water	92	110.4
Total	194	232.8

- 3 Gently vortex mix, briefly centrifuge, and place back on ice.
- 4 Place the tube of washed Cell Capture Beads on a 1.5-mL tube magnet for ≥2 minutes. Remove the supernatant.
- 5 Remove the tube from the magnet and pipet 194 µL of cDNA mix into the beads. Pipet-mix.

NOTE Keep the prepared cDNA mix with beads on ice until the suspension is transferred in the next step.

- 6 Transfer the bead suspension to a new 1.5-mL LoBind tube.
- 7 Incubate the bead suspension on a thermomixer at 1,200 rpm and 42°C for 30 minutes.

Shaking is critical for this incubation.

- 8 Add 6 μL of template switch oligo (100 μM 5' T TTT TTT TTT TTT TTT TTT TTT rG rG rG 3') and 2 μL of 1 M MgCl_2 to the reaction mix, and incubate on the thermomixer for another 30 minutes at 1,200 rpm and 42°C.

STOPPING POINT: BD Rhapsody Cell Capture Beads can be stored up to 4 days at 2°C to 8°C after template switching.

If stopping after template switching:

- Place the bead suspension on the 1.5-mL tube magnet until the solution is clear (≤ 1 minute).
 - Carefully remove and appropriately discard the supernatant without disturbing the beads and while leaving the tube on the magnet.
 - Remove the tube from the magnet, and with a low-retention tip, pipet 200 μL of Tris-Tween 20 to gently resuspend the beads. Do not vortex.
 - Store the beads at 2°C to 8°C for up to 4 days.
- 9 During incubation, prepare 5 mL of 50 mM Tris-HCl. Keep at room temperature.
- NOTE** 50 mM Tris-HCl is from 1 M Tris-HCl diluted with nuclease-free water (i.e., 1:20 dilution).
- 10 If using the *BD Rhapsody™ Single-Cell Analysis System Instrument User Guide*, view the BD Rhapsody scanner image analysis to see if analysis metrics passed.

Denaturation and self-hybridization

Prepare 5 mL of 50 mM Tris-HCl and keep at room temperature. Thaw reagents for Klenow extension at room temperature (15°C to 25°C). Keep Klenow fragment exo- enzyme at -25°C to -15°C.

If the BD Rhapsody Cell Capture Beads were stored after template switching, briefly centrifuge and proceed to [step 4](#).

- 1 Set one thermomixer to 37°C, a second thermomixer to 25°C, and a third thermomixer or heat block to 95°C.
- 2 Place the tube of Cell Capture Beads with cDNA mix on a 1.5-mL tube magnet for ≤ 1 minute. Remove the supernatant.
- 3 Remove the tube from the magnet and pipet 200 μL of Tris-Tween 20 buffer into the tube. Pipet-mix.
- 4 To denature, incubate the tube in the following order:
 - Ensure that the beads are resuspended. Pipet-mix to resuspend, if needed.
 - Incubate the sample at 95°C in a heat block (no shaking) for 5 minutes.
 - Place the tube in a thermomixer at any temperature for 10 seconds at 1,200 rpm to resuspend the beads.
- 5 Immediately place the tube on the magnet for ≤ 30 seconds until clear. Remove the supernatant.

- 6 Resuspend the beads in 1.5 mL of 50 mM Tris-HCl.
- 7 Incubate the bead suspension on a thermomixer at 1,200 rpm and 25°C for 2 minutes.

Klenow extension

- 1 Set a thermomixer to 37°C.
- 2 Ensure all reagents other than Klenow fragment exo- are at room temperature.
- 3 In a new 1.5-mL LoBind tube, pipet the following reagents.

Klenow extension mix

Component	For 1 library (µL)	For 1 library with 20% overage (µL)
10X Klenow Buffer	20	24
dNTP	20	24
Klenow fragment exo-	10	12
Nuclease-free water	150	180
Total	200	240

- 4 Gently vortex mix, briefly centrifuge, and keep at room temperature.
- 5 Briefly spin the tube with the bead suspension.
- 6 Place the tube of Cell Capture Beads on the 1.5-mL tube magnet for ≤2 minutes. Remove the supernatant.
- 7 Remove the tubes from the magnet and resuspend using 200 µL of Klenow extension mix. Pipet-mix.
- 8 Incubate the bead suspension on the thermomixer at 1,200 rpm and 37°C for 30 minutes.
- 9 Briefly spin the tube with the bead suspension and place the tube on ice.

Treating the sample with Exonuclease I

Thaw reagents for Exonuclease I treatment at room temperature (15°C to 25°C). Keep Exonuclease I enzyme at –25°C to –15°C.

- 1 Set one thermomixer to 37°C and a second thermomixer or heat block to 80°C.
- 2 In a new 1.5-mL LoBind tube, pipet the following reagents.

Exonuclease I mix

Kit component	For 1 library (µL)	For 1 library with 20% overage (µL)
10X Exonuclease I Buffer	20	24
Exonuclease I	10	12
Nuclease-free water	170	204
Total	200	240

- 3 Gently vortex mix, briefly centrifuge, and keep at room temperature.
- 4 Place the tube of Cell Capture Beads with Klenow Extension mix on the 1.5-mL tube magnet for ≤1 minute. Remove the supernatant.
- 5 Remove the tube from the magnet and pipet 200 µL Exonuclease I mix into the tube. Pipet-mix.
- 6 Incubate the bead suspension on the thermomixer at 1,200 rpm and 37°C for 30 minutes.
- 7 Incubate the bead suspension on the thermomixer (no shaking) or heat block at 80°C for 20 minutes.
- 8 Place the tube on ice for ~1 minute.
- 9 Briefly spin the tube with the bead suspension.
- 10 Place the tube on the magnet for ≤1 minute until clear. Remove the supernatant.
- 11 Remove the tube from the magnet, and pipet 200 µL of cold Bead Resuspension Buffer into the tube. Pipet-mix.

STOPPING POINT: Exonuclease I-treated beads can be stored at 2°C to 8°C for up to 3 months.

- 12 Proceed to library preparation.

Targeted mRNA, TCR, BCR, BD AbSeq, and Sample Tag library preparation

This protocol provides instructions on creating BD Rhapsody targeted mRNA, TCR, BCR, BD AbSeq, and Sample Tag libraries with the BD Rhapsody Single-Cell Analysis system or the BD Rhapsody Express Single-Cell Analysis system for sequencing on Illumina sequencers.

Successful preparation of targeted mRNA, TCR, BCR, BD AbSeq, and Sample Tag libraries requires that:

- The BD Abseq and Sample Tag PCR1 products undergo a separate index PCR from targeted mRNA, TCR, and BCR products with library index primers.
- Targeted mRNA, TCR, BCR, and Sample Tag PCR1 products undergo PCR2 amplification followed by index PCR with library index primers.

Required materials

Material	Supplier	Catalog No.
Exonuclease I-treated beads containing samples labelled with Sample Tags and BD Abseq Ab-Oligos	–	–
BD Rhapsody Targeted mRNA and AbSeq Amplification Kit	BD Biosciences	633774
Agencourt AMPure XP magnetic beads	Beckman Coulter	A63880
100% ethyl alcohol	Major supplier	–
10 mM Tris-HCl with 0.05% Tween [®] 20, pH 8.0 (Tris-Tween 20)	Teknova	T1485
DNA Suspension Buffer, pH 8.0, DNase/RNase Tested, PCR Grade	Teknova	T0221
Nuclease-free water	Major supplier	–
BD Rhapsody™ panel	BD Biosciences	Various
Qubit™ dsDNA HS Assay Kit	Thermo Fisher Scientific	Q32851
Agilent DNA High Sensitivity Kit	Agilent Technologies	5067-4626
Or,		
Agilent High Sensitivity D5000 ScreenTape	Agilent Technologies	5067-5592
Agilent High Sensitivity D5000 Reagents	Agilent Technologies	5067-5593

Human T cell PCR1 primers

Primer Name	Primer Sequence (5' – 3')
TRAC_N1	CTGGAATAATGCTGTTGTTGAAGG
TRBC_N1	AGCCCGTAGAACTGGACTT
TRDC_N1	CTTCAAAGTCAGTGGAGTGCA
TRGC_N1	CACCGTTAACCAGCTAAATTTTCATG

Pooling Human T cell PCR1 primer panel

Name	Primer Stock Conc. (μM)	Volume per primer (μL)	DNA Suspension Buffer (μL)	Final volume (μL)
TRAC_N1 TRBC_N1 TRDC_N1 TRGC_N1	100	25.00	400.00	500

Human T cell PCR2 primers

Primer Name	Primer Sequence (5' – 3')
TRAC_N2	CAGACGTGTGCTCTTCCGATCTATCAAAATCGGTGAATAGGCAGAC
TRBC_N2	CAGACGTGTGCTCTTCCGATCTGATCTCTGCTTCTGATGGCTCA
TRDC_N2	CAGACGTGTGCTCTTCCGATCTATATCCTTGGGGTAGAATTCCTTC
TRGC_N2	CAGACGTGTGCTCTTCCGATCTGGGAAACATCTGCATCAAGTTG

Pooling Human T cell PCR2 primer panel

Name	Primer Stock Conc. (μM)	Volume per primer (μL)	DNA Suspension Buffer (μL)	Final volume (μL)
TRAC_N2 TRBC_N2 TRDC_N2 TRGC_N2	100	25.00	400.00	500

Human B cell PCR1 primers

Primer Name	Primer Sequence (5' – 3')
IGHA_N1	CACAGTCACATCCTGGCT
IGHD_N1	GATCTCCTTCTTACTCTTGCTGG
IGHE_N1	CGCTGAAGGTTTTGTTGTCG
IGHG_N1	TGTTGCTGGGCTTGTGAT
IGHM_N1	CGTTCCTTTCTTTGTTGCCGT
IGKC_N1	TTTGTGTTTCTCGTAGTCTGCT
IGLC_N1	TGTAGCTTCTGTGGGACTTC

Pooling Human B cell PCR1 primer panel

Name	Primer Stock Conc. (μM)	Volume per primer (μL)	DNA Suspension Buffer (μL)	Final volume (μL)
IGHA_N1 IGHD_N1 IGHE_N1 IGHG_N1 IGHM_N1 IGKC_N1 IGLC_N1	100	15.00	420.00	525

Human B cell PCR2 primers

Primer Name	Primer Sequence (5' – 3')
IGHA_N2	CAGACGTGTGCTCTTCCGATCTCTTTTCGCTCCAGGTCACACT
IGHD_N2	CAGACGTGTGCTCTTCCGATCTTGTCTGCACCCTGATATGATGG
IGHE_N2	CAGACGTGTGCTCTTCCGATCTGTCAAGGGGAAGACGGATG
IGHG_N2	CAGACGTGTGCTCTTCCGATCTAAGTAGTCCTTGACCAGGCA
IGHM_N2	CAGACGTGTGCTCTTCCGATCTACAGGAGACGAGGGGGAAAA
IGKC_N2	CAGACGTGTGCTCTTCCGATCTTCAGATGGCGGGAAGATGAA
IGLC_N2	CAGACGTGTGCTCTTCCGATCTACCAGTGTGGCCTTGTTG

Pooling Human B cell PCR2 primer panel

Name	Primer Stock Conc. (μM)	Volume per primer (μL)	DNA Suspension Buffer (μL)	Final volume (μL)
IGHA_N2 IGHD_N2 IGHE_N2 IGHG_N2 IGHM_N2 IGKC_N2 IGLC_N2	100	75.00	N/A	525

Before you begin

- Obtain Exonuclease I-treated BD Rhapsody Cell Capture Beads.
- Thaw the reagents in the BD Rhapsody Targeted mRNA and AbSeq Amplification Kit at room temperature (15°C to 25°C), and then place on ice.

Performing PCR1

- 1 In the pre-amplification workspace, pipet the following reagents into a new 1.5-mL LoBind tube.

PCR1 reaction mix

Component	For 1 library (μL)	For 1 library with 20% overage (μL)
PCR MasterMix	100	120
Universal Oligo	20	24
Bead RT/PCR Enhancer	12	14.4
PCR1 targeted mRNA primer panel	40	48
TCR PCR1 primer panel	2.4	2.88
BCR PCR1 primer panel	4.2	5.04
BD AbSeq Primer	12	14.4
Sample Tag PCR1 Primer	1.2	1.4
Nuclease-free water	8.2	9.84
Total	200	240

- 2 Gently vortex mix, briefly centrifuge, and place back on ice.

- 3** Proceed as follows:
- Entire sample: Skip to [step 5](#).
 - Sub-sample: Proceed to [step 4](#).
- 4** Sub-sample the Exonuclease I-treated beads:
- a Based on the number of wells with viable cells and a bead detected by the BD Rhapsody™ Scanner or the number of cells targeted for capture in the cartridge, determine the volume of beads to subsample for targeted sequencing.
 - b Briefly spin the tube with the bead suspension. Pipet-mix to completely resuspend the beads, and pipet the calculated volume of bead suspension into a new 1.5-mL LoBind tube.
- The remaining beads can be stored at 2°C to 8°C for up to 3 months.
- 5** Briefly spin the tube with the bead suspension. Place the tube of Exonuclease I-treated beads in Bead Resuspension Buffer on the 1.5-mL magnet for ≤1 minute. Remove the supernatant.
 - 6** Remove the tube from the magnet and resuspend the beads in 200 µL of PCR1 reaction mix. Do not vortex.
 - 7** Ensuring that the beads are fully resuspended, pipet 50 µL of PCR1 reaction mix with beads into each of four 0.2-mL PCR tubes. Transfer any residual mix to one of the tubes.
 - 8** Bring the reaction mix to the post-amplification workspace.
 - 9** Program the thermal cycler as follows. **Do not use fast cycling mode.**

Step	Cycles	Temperature	Time
Hot start	1	95°C ^a	3 min
Denaturation	11–14 ^b	95°C	30 s
Annealing		60°C	3 min
Extension		72°C	1 min
Final extension	1	72°C	5 min
Hold	1	4°C	∞

- a. To avoid beads settling due to prolonged incubation time on the thermal cycler before the denaturation step, it is critical to pause the instrument at 95°C before loading the samples. Different thermal cyclers might have different pause time settings. In certain brands of thermal cyclers, however, BD Biosciences has observed a step-skipping error with the pause/unpause functions. To ensure that the full 3-minute denaturation is not skipped, verify that the pause/unpause functions are working correctly on your thermal cycler. To avoid the step-skipping problem, a 1-minute 95°C pause step can be added immediately before the 3-minute 95°C denaturation step.
- b. Suggested PCR cycles might need to be optimized for different cell types and cell number.

Suggested number of PCR cycles

Number of cells in PCR1	Suggested PCR cycles for resting PBMCs
1,000	14
2,500	13
5,000	12
10,000	11

- 10** Ramp the heated lid and heat block of the post-amplification thermal cycler to $\geq 95^{\circ}\text{C}$ by starting the thermal cycler program and then pausing it.

Do not proceed to thermal cycling until each tube is gently mixed by pipette to ensure uniform bead suspension.

- 11** For each 0.2-mL PCR tube, gently pipet-mix, immediately place the tube in the thermal cycler, and unpauses the thermal cycler program.

STOPPING POINT: The PCR can run overnight, but proceed with purification within 24 hours after PCR.

- 12** After PCR, briefly centrifuge the tubes.

- 13** Pipet-mix and combine the four reactions into a new 1.5-mL LoBind tube.

- 14** Place the 1.5-mL tube on the magnet for ≤ 1 minute. **Retain the supernatant.** Carefully pipet the supernatant (PCR1 products) into the new 1.5-mL LoBind tube without disturbing the beads.

NOTE (Optional) Remove the tube with the Cell Capture Beads from the magnet, and pipet 200 μL of cold Bead Resuspension Buffer into the tube. Pipet-mix. Do not vortex. Store the beads at 2°C to 8°C in the post-amplification workspace.

Purifying PCR1 products by double-sided size selection

Perform double-sided AMPure bead purification to separate the shorter BD AbSeq PCR1 products (~170 bp) and Sample Tag PCR1 products (~250 bp) from the longer targeted mRNA (350–800 bp) and TCR/BCR PCR1 products (600–1,000 bp).

In the protocol, keep both the supernatant (AbSeq and Sample Tag products) and the AMPure beads (targeted mRNA, TCR, and BCR products) during the purification workflow.

NOTE Perform the purification in the post-amplification workspace.

Separating BD AbSeq and Sample Tag PCR1 products from targeted mRNA, TCR, and BCR PCR1 products

- 1 In a new 5.0-mL LoBind tube, prepare 5 mL of fresh 80% (v/v) ethyl alcohol by combining 4.0 mL absolute ethyl alcohol, molecular biology grade, with 1.0 mL of nuclease-free water. Vortex the tube for 10 seconds to mix.

Make fresh 80% ethyl alcohol and use it within 24 hours.
- 2 Bring Agencourt AMPure XP magnetic beads to room temperature (15°C to 25°C). Vortex on high speed for 1 minute until the beads are fully resuspended.
- 3 Pipet 140 µL of AMPure beads into the tube with 200 µL of PCR1 products. Pipet-mix 10 times.
- 4 Incubate at room temperature (15°C to 25°C) for 5 minutes.
- 5 Place the 1.5-mL LoBind tube on the magnet for 5 minutes.
- 6 Keeping the tube on the magnet, transfer the 340 µL of supernatant (BD AbSeq and Sample Tag PCR1 products) to a new 1.5-mL tube without disturbing the beads (targeted mRNA, TCR, and BCR PCR1 products).
- 7 Store the supernatant ([step 6](#)) at room temperature (15°C to 25°C) while purifying and eluting the targeted mRNA, TCR, and BCR PCR1 products in [Purifying targeted mRNA, TCR, and BCR PCR1 products](#) in the following section. Purify the targeted mRNA, TCR, and BCR PCR1 products first, then continue with purifying the BD AbSeq and Sample Tag PCR1 products.

Purifying targeted mRNA, TCR, and BCR PCR1 products

- 1 Keeping the tube on the magnet, gently add 500 µL of fresh 80% ethyl alcohol to the tube of AMPure beads bound with targeted mRNA, TCR, and BCR PCR1 products, and incubate for 30 seconds. Remove the supernatant.
- 2 Repeat [step 1](#) for a total of two washes.
- 3 Keeping the tube on the magnet, use a small-volume pipette to remove and discard any residual supernatant from the tube.
- 4 Air-dry the beads at room temperature (15°C to 25°C) for 3 minutes.
- 5 Remove the tube from the magnet and resuspend the bead pellet in 30 µL of Tris-Tween 20. Vigorously pipet-mix until the beads are uniformly dispersed. Small clumps do not affect performance.
- 6 Incubate at room temperature (15°C to 25°C) for 2 minutes and briefly centrifuge.
- 7 Place the tube on the magnet until the solution is clear, usually ≤30 seconds.
- 8 Pipet the eluate (~30 µL) into a new 1.5-mL LoBind tube (purified targeted mRNA, TCR, and BCR PCR1 products).

STOPPING POINT: Store at 2°C to 8°C before proceeding within 24 hours or at –25°C to –15°C for up to 6 months.

Purifying BD AbSeq/Sample Tag PCR1 products

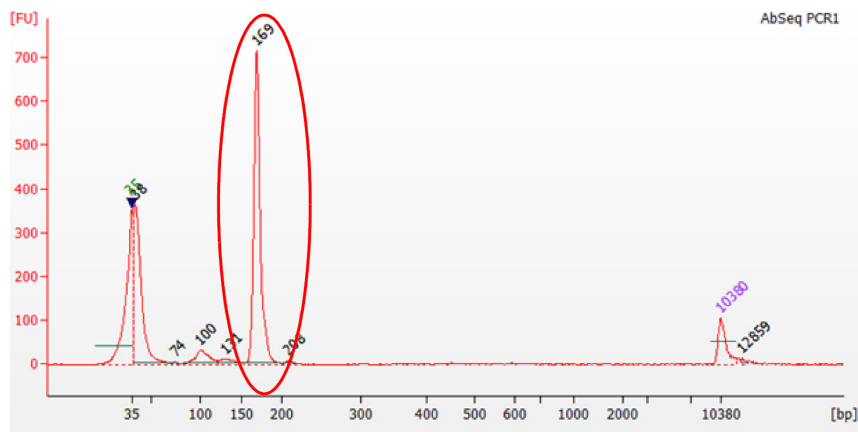
- 1** Pipet 100 µL of AMPure XP beads into the tube with 340 µL of BD AbSeq/Sample Tag PCR1 products from [step 6 of Separating BD AbSeq and Sample Tag PCR1 products from targeted mRNA, TCR, and BCR PCR1 products](#). Pipet-mix 10 times.
- 2** Incubate at room temperature (15°C to 25°C) for 5 minutes.
- 3** Place on a magnet for 5 minutes.
- 4** Keeping the tube on the magnet, remove the supernatant.
- 5** Keeping the tube on the magnet, gently add 500 µL of fresh 80% ethyl alcohol and incubate for 30 seconds. Remove the supernatant.
- 6** Repeat [step 5](#) for a total of two washes.
- 7** Keeping the tube on the magnet, use a small-volume pipette to remove and discard any residual supernatant from the tube.
- 8** Air-dry the beads at room temperature (15°C to 25°C) for 3 minutes.
- 9** Remove the tube from the magnet and resuspend the bead pellet in 30 µL of Tris-Tween 20. Vigorously pipet-mix until the beads are uniformly dispersed. Small clumps do not affect performance.
- 10** Incubate at room temperature (15°C to 25°C) for 2 minutes and briefly centrifuge.
- 11** Place the tube on the magnet until the solution is clear, usually ≤30 seconds.
- 12** Pipet the eluate (~30 µL) into a new 1.5-mL LoBind tube (purified BD AbSeq/Sample Tag PCR1 products).

STOPPING POINT: Store at 2°C to 8°C before proceeding within 24 hours or at –25°C to –15°C for up to 6 months.

Quantifying BD AbSeq/Sample Tag PCR1 products

- 1 Measure the yield of the largest peak of the BD AbSeq/Sample Tag PCR1 products (~170 bp) by using the Agilent Bioanalyzer with the High Sensitivity Kit. Follow the manufacturer's instructions.

Figure 1 BD AbSeq PCR1 product



	Size [bp]	Conc. [$\mu\text{g}/\mu\text{l}$]	Molarity [$\mu\text{mol/l}$]	Observations
▶ ◀	35	125.00	5,411.3	Lower Marker
2	38	1,436.39	57,479.7	
3	74	10.62	216.9	
4	100	191.66	2,902.8	
5	131	68.63	796.3	
6	169	1,552.22	13,924.8	
7	208	16.92	123.0	
8	10.380	75.00	10.9	Upper Marker

Results Peak Table Region Table Legend

- 2 Dilute an aliquot of the BD AbSeq/Sample Tag PCR1 products to 0.1–1.1 $\text{ng}/\mu\text{L}$ with Tris-Tween 20 before index PCR of the BD AbSeq PCR1 products. Keep on ice. Use undiluted PCR1 products for Sample Tag PCR2 amplification.

Performing PCR2 on the targeted mRNA, TCR, BCR, and Sample Tag PCR1 products

NOTE Only the targeted mRNA, TCR, BCR, and Sample Tag require PCR2 amplification. The BD AbSeq PCR1 products require only index PCR. Targeted mRNA, TCR, BCR, and Sample Tag products are amplified separately in PCR2.

- 1 In the pre-amplification workspace, pipet the following reagents into a new 1.5-mL LoBind tube on ice.

Targeted mRNA PCR2 reaction mix

Component	For 1 library (µL)	For 1 library with 20% overage (µL)
PCR MasterMix	25	30
Universal Oligo	2	2.4
PCR2 targeted mRNA primer panel	10	12
Nuclease-free water	8	9.6
Total	45	54

TCR PCR2 reaction mix

Component	For 1 library (µL)	For 1 library with 20% overage (µL)
PCR MasterMix	25	30
Universal Oligo	2	2.4
TCR PCR2 primer panel	6	7.2
Nuclease-free water	12	14.4
Total	45	54

BCR PCR2 reaction mix

Component	For 1 library (µL)	For 1 library with 20% overage (µL)
PCR MasterMix	25	30
Universal Oligo	2	2.4
BCR PCR2 primer panel	2	2.4
Nuclease-free water	16	19.2
Total	45	54

Sample Tag PCR2 reaction mix

Component	For 1 library (µL)	For 1 library with 20% overage (µL)
PCR MasterMix	25	30
Universal Oligo	2	2.4
Sample Tag PCR2 primer	3	3.6
Nuclease-free water	15	18
Total	45	54

- 2 Gently vortex mix, briefly centrifuge, and place back on ice.
- 3 Bring the PCR2 mixes into the post-amplification workspace.
- 4 In a new 0.2-mL PCR tube,
 - a Pipet 5.0 µL of purified PCR1 products (which contain targeted mRNA, TCR, and BCR products) into each of the respective 45 µL of targeted mRNA, TCR, or BCR PCR2 reaction mixes.
 - b Pipet 5.0 µL of purified PCR1 BD AbSeq/Sample Tag products into 45 µL of the Sample Tag PCR2 reaction mix.
- 5 Gently vortex and briefly centrifuge.
- 6 Program the thermal cycler as follows. **Do not use fast cycling mode.**

Targeted mRNA PCR2

Step	Cycles	Temperature	Time
Hot start	1	95°C	3 min
Denaturation	10 ^a	95°C	30 s
Annealing		60°C	3 min
Extension		72°C	1 min
Final extension	1	72°C	5 min
Hold	1	4°C	∞

- a. Cycle number might require optimization according to cell number and type.

TCR and BCR PCR2

Step	Cycles	Temperature	Time
Hot start	1	95°C	3 min
Denaturation	15	95°C	30 s
Annealing		60°C	1 min
Extension		72°C	1 min
Final extension	1	72°C	5 min
Hold	1	4°C	∞

Sample Tag PCR2

Step	Cycles	Temperature	Time
Hot start	1	95°C	3 min
Denaturation	10	95°C	30 s
Annealing		66°C	30 s
Extension		72°C	1 min
Final extension	1	72°C	5 min
Hold	1	4°C	∞

STOPPING POINT: The PCR can run overnight.

Purifying targeted mRNA, TCR, BCR, and Sample Tag PCR2 products

Purify targeted mRNA and Sample Tag PCR2 products first, then continue with purifying TCR and BCR PCR2 products.

NOTE Perform the purification in the post-amplification workspace.

Purifying targeted mRNA and Sample Tag PCR2 products

- 1 In a new 5.0-mL LoBind tube, prepare 5 mL of fresh 80% (v/v) ethyl alcohol by combining 4.0 mL of absolute ethyl alcohol, molecular biology grade, with 1.0 mL of nuclease-free water. Vortex the tube for 10 seconds to mix.

Make fresh 80% ethyl alcohol and use it within 24 hours.

- 2 Bring AMPure XP beads to room temperature (15°C to 25°C) and vortex at high speed for 1 minute until the beads are fully resuspended.

- 3 Briefly centrifuge the PCR2 products.
- 4 Add the appropriate volume of AMPure XP beads to the PCR2 products:
 - a To the targeted mRNA PCR2 products, pipet 40 μ L of AMPure XP beads. Pipet-mix 10 times.
 - b To the Sample Tag PCR2 products, pipet 60 μ L of AMPure XP beads. Pipet-mix 10 times.
- 5 Incubate at room temperature (15°C to 25°C) for 5 minutes.
- 6 Place the tube on the strip tube magnet for 3 minutes. Remove the supernatant.
- 7 Keeping the targeted mRNA and Sample Tag tubes on the magnet, gently add 200 μ L of fresh 80% ethyl alcohol into the tube and incubate for 30 seconds. Remove the supernatant.
- 8 Repeat [step 7](#) for a total of two washes.
- 9 Keeping the tubes on the magnet, use a small-volume pipette to remove and discard any residual supernatant from the tube.
- 10 Air-dry the beads at room temperature (15°C to 25°C) for 1 minute.
- 11 Remove the tubes from the magnet and resuspend the bead pellet in 30 μ L of Tris-Tween 20. Pipet-mix until the beads are fully resuspended.
- 12 Incubate at room temperature (15°C to 25°C) for 2 minutes and briefly centrifuge.
- 13 Place the tubes on the magnet until the solution is clear, usually \leq 30 seconds.
- 14 For each sample, pipet the entire eluate (~30 μ L) into two new 1.5-mL LoBind tubes (purified targeted mRNA and Sample Tag PCR2 products).

STOPPING POINT: Store at 2°C to 8°C before proceeding on the same day or at -25°C to -15°C for up to 6 months.

Purifying TCR and BCR PCR2 products by double-sided size selection

- 1 To the TCR and BCR PCR2 products, pipet 55 μ L of nuclease-free water. Transfer 100 μ L of diluted PCR2 product to a new 0.2-mL tube.
- 2 Add 50 μ L AMPure XP beads to 100 μ L of diluted PCR2 product. Pipet-mix 10 times.
- 3 Incubate at room temperature (15°C to 25°C) for 5 minutes.
- 4 Place the tube on the strip tube magnet for 3 minutes.
- 5 Keeping the tube on the magnet, transfer the 150 μ L of supernatant (TCR and BCR PCR2 products) to a new 0.2-mL tube without disturbing the beads.
- 6 To the TCR and BCR PCR2 supernatant, add 10 μ L of AMPure XP beads. Pipet-mix 10 times.

- 7** Incubate at room temperature (15°C to 25°C) for 5 minutes.
- 8** Place the tube on the strip tube magnet for 1 minute. Remove the supernatant.
- 9** Keeping the tube on the magnet, gently add 200 µL of fresh 80% ethyl alcohol into the tube and incubate for 30 seconds. Remove the supernatant.
- 10** Repeat [step 9](#) for a total of two washes.
- 11** Keeping the tube on the magnet, use a small-volume pipette to remove and discard any residual supernatant from the tube.
- 12** Air-dry the beads at room temperature (15°C to 25°C) for 30 seconds.
- 13** Remove the tube from the magnet and resuspend the bead pellet in 30 µL of Tris-Tween 20. Pipet-mix until the beads are fully resuspended.
- 14** Incubate at room temperature (15°C to 25°C) for 2 minutes and briefly centrifuge.
- 15** Place the tube on the magnet until the solution is clear, usually ≤30 seconds.
- 16** For each sample, pipet the entire eluate (~30 µL) into a new 1.5-mL LoBind tube (purified TCR and BCR PCR2 products).

STOPPING POINT: Store at 2°C to 8°C before proceeding on the same day, or at –25°C to –15°C for up to 6 months.
- 17** Estimate the concentration by quantifying 2 µL of the PCR2 products with a Qubit Fluorometer using the Qubit dsDNA HS Assay Kit. Follow the manufacturer’s instructions.
- 18** Dilute an aliquot of the PCR2 products with Tris-Tween 20:
 - Targeted mRNA PCR2 products: 0.2-2.7 ng/µL
 - Sample Tag PCR2 products: 0.1–1.1 ng/µL
 - TCR and BCR PCR2 products: 0.5 ng/µL

Performing index PCR to prepare final libraries

- 1 In the pre-amplification workspace, pipet the following reagents into a new 1.5-mL LoBind tube.

For a single cartridge or sample, consider using the same index for all libraries for that cartridge or sample. If libraries are to be indexed differently, prepare separate index PCR mixes containing different library reverse primers for each library type.

Targeted mRNA, BD AbSeq, and Sample Tag Index PCR mix

Kit Component	For 1 library (µL)	For 1 library with 20% overage (µL)
PCR MasterMix	25	30
Library Forward Primer	2	2.4
Library Reverse Primer 1–4	2	2.4
Nuclease-free water	18	21.6
Total	47	56.4

TCR/BCR Index PCR mix

Kit Component	For 1 library (µL)	For 1 library with 20% overage (µL)
PCR MasterMix	25	30
Library Forward Primer	2	2.4
Library Reverse Primer 1–4	2	2.4
Total	29	34.8

- 2 Gently vortex mix, briefly centrifuge, and place back on ice.
- 3 Bring the index PCR mixes to the post-amplification workspace.
- 4 In new 0.2-mL PCR tubes:
 - a For targeted mRNA library, pipet 3.0 µL of 0.2–2.7 ng/µL PCR2 products into 47.0 µL of index PCR mix.
 - b For Sample Tag libraries, pipet 3.0 µL of 0.1–1.1 ng/µL PCR2 products into 47.0 µL index PCR mix.
 - c For BD AbSeq libraries, pipet 3.0 µL of 0.1–1.1 ng/µL PCR1 products into 47.0 µL index PCR mix.
 - d For TCR and BCR libraries, pipet 21.0 µL of 0.5 ng/µL PCR2 products into 29.0 µL of index PCR mix.

- 5 Gently vortex and briefly centrifuge.
- 6 Program the thermal cycler as follows. **Do not use fast cycling mode.**

Step	Cycles	Temperature	Time
Hot start	1	95°C	3 min
Denaturation	Targeted mRNA, AbSeq, and Sample Tag: 6–8. See the following table Suggested number of PCR cycles TCR/BCR: 7	95°C	30 s
Annealing		60°C	30 s
Extension		72°C	30 s
Final extension	1	72°C	1 min
Hold	1	4°C	∞

Suggested number of PCR cycles

Conc. index PCR input for mRNA targeted libraries (ng/μL)	Conc. index PCR input for Sample Tag and BD AbSeq libraries (ng/μL)	Suggested PCR cycles
1.2–2.7	0.5–1.1	6
0.6–1.2	0.25–0.5	7
0.2–0.6	0.1–0.25	8

STOPPING POINT: The PCR can run overnight.

Purifying index PCR products

NOTE Perform the purification in the post-amplification workspace.

- 1 In a new 5.0-mL LoBind tube, prepare 5 mL of fresh 80% (v/v) ethyl alcohol by combining 4.0 mL of absolute ethyl alcohol, molecular biology grade, with 1.0 mL of nuclease-free water. Vortex the tube for 10 seconds to mix.

Make fresh 80% ethyl alcohol and use it within 24 hours.

- 2 Bring AMPure XP beads to room temperature (15°C to 25°C), and vortex at high speed for 1 minute until the beads are fully resuspended.
- 3 Briefly centrifuge the index PCR products.
- 4 To 50.0 μL of the index PCR products, pipet:
 - Targeted mRNA libraries: 35 μL of AMPure beads
 - BD AbSeq and Sample Tag libraries: 40 μL of AMPure beads

- TCR and BCR libraries: 30 μ L of AMPure beads
- 5 Pipet-mix 10 times and incubate at room temperature (15°C to 25°C) for 5 minutes.
 - 6 Place the tubes on the strip tube magnet for 3 minutes. Remove the supernatant.
 - 7 Keeping the tubes on the magnet, for each tube, gently add 200 μ L of fresh 80% ethyl alcohol into the tube and incubate for 30 seconds. Remove the supernatant.
 - 8 Repeat [step 7](#) for a total of two washes.
 - 9 Keeping the tubes on the magnet, use a small-volume pipette to remove and discard any residual supernatant from the tubes.
 - 10 Air-dry the beads at room temperature (15°C to 25°C) for 1 minute.
 - 11 Remove the tubes from the magnet and resuspend the bead pellet in 30 μ L of Tris-Tween 20. Pipet-mix until the beads are fully resuspended.
 - 12 Incubate at room temperature (15°C to 25°C) for 2 minutes and briefly centrifuge.
 - 13 Place the tubes on the magnet until the solution is clear, usually \leq 30 seconds.
 - 14 For each tube, pipet the entire eluate (~30 μ L) into a new 1.5-mL LoBind tube (final sequencing libraries).

Additional TCR and BCR index PCR purification

- 15 To each tube from [step 14](#) (only TCR and BCR tubes), add 20 μ L of nuclease-free water to bring the purified index PCR product volume up to 50 μ L. Transfer to separate new 0.2-mL PCR tubes.

NOTE It is critical for the final volume to be exactly 50 μ L to achieve the desired size selection.

- 16 To 50 μ L of the purified index PCR products, pipet 30 μ L of AMPure beads. Pipet-mix 10 times.
- 17 Incubate at room temperature (15°C to 25°C) for 5 minutes.
- 18 Place the tubes on the strip tube magnet for 3 minutes. Remove the supernatant.
- 19 Keeping the tubes on the magnet, for each tube, gently add 200 μ L of fresh 80% ethyl alcohol and incubate for 30 seconds. Remove the supernatant.
- 20 Repeat [step 19](#) for a total of two washes.
- 21 Keeping the tubes on the magnet, use a small-volume pipette to remove and discard any residual supernatant from the tubes.
- 22 Air-dry the beads at room temperature (15°C to 25°C) for 1 minute.
- 23 Remove the tubes from the magnet and resuspend the bead pellet in 30 μ L of Tris-Tween 20. Pipet-mix until the beads are fully resuspended.

- 24 Incubate at room temperature (15°C to 25°C) for 2 minutes and briefly centrifuge.
- 25 Place the tubes on the magnet until the solution is clear, usually ≤ 30 seconds.
- 26 For each tube, pipet the entire eluate (~ 30 μL) into a separate new 1.5-mL LoBind tube (final sequencing libraries).
- 27 Including the targeted mRNA, BD AbSeq, and Sample Tag final sequencing libraries (from [step 14](#)), perform quality control before freezing the samples. See [Performing quality control on the final sequencing libraries](#) in the following section.

STOPPING POINT: Store at -25°C to -15°C for up to 6 months until sequencing.

Performing quality control on the final sequencing libraries

- 1 Estimate the concentration of each sample by quantifying 2 μL of the final sequencing library with a Qubit Fluorometer, using the Qubit dsDNA HS Kit to obtain an approximate concentration of PCR products to dilute for quantification on an Agilent 2100 Bioanalyzer. Follow the manufacturer's instructions. The expected concentration of the libraries is >1.5 $\text{ng}/\mu\text{L}$.
- 2 Measure the average fragment size of the targeted mRNA, TCR, BCR, AbSeq, and Sample Tag libraries within the size range of 100–1,000 bp by using the Agilent Bioanalyzer with the High Sensitivity Kit for 50–7,000 bp, 5–1,000 $\text{pg}/\mu\text{L}$. Follow the manufacturer's instructions. Refer to the sample trace images.

Figure 2 BD Rhapsody Immune Response Panel Hs (human)

Fragment distribution of ~ 450 –700 bp.

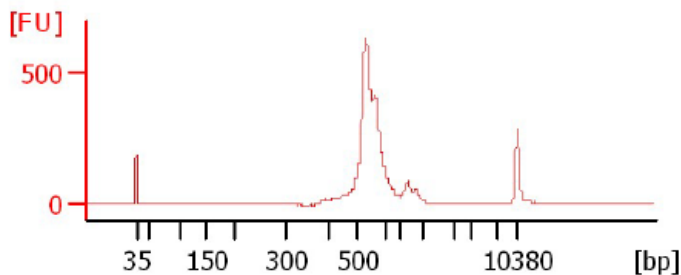


Figure 3 BD Rhapsody TCR Library

Fragment distribution of ~600–1,000 bp.

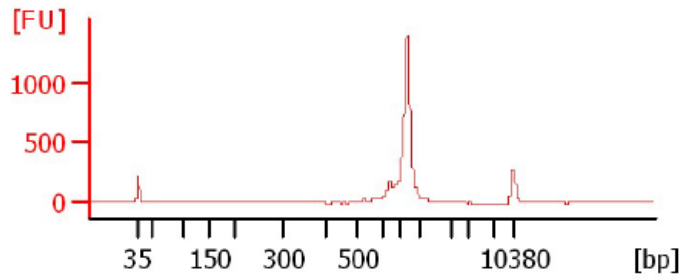


Figure 4 BD Rhapsody BCR Library

Fragment distribution of ~600–1,000 bp.

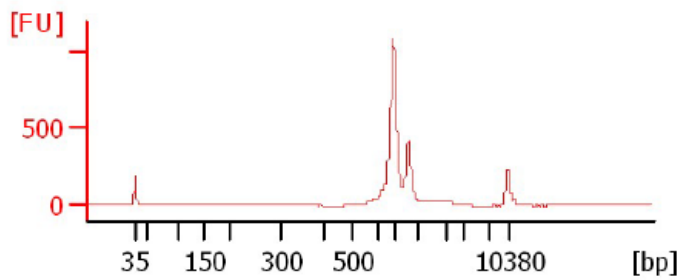


Figure 5 BD Rhapsody Sample Tag Library

Fragment distribution of ~150–300 bp.

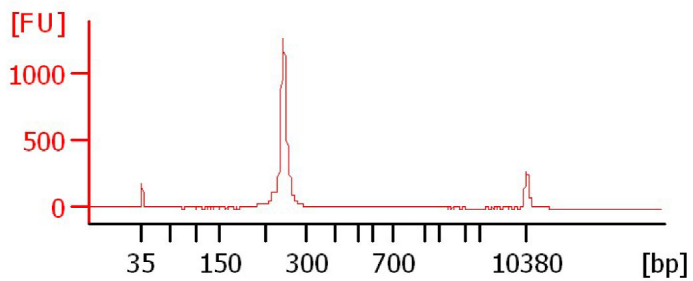
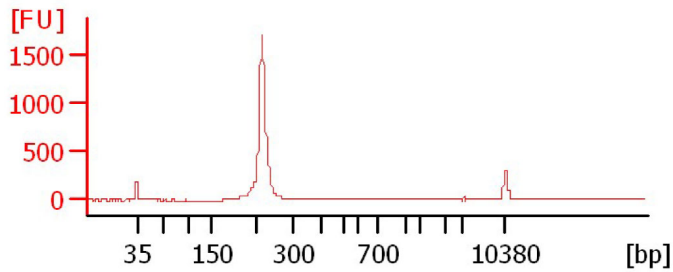


Figure 6 BD Rhapsody AbSeq Library

Fragment distribution of ~150–300 bp.



Sequencing

Requirements

- Run setup for Illumina® BaseSpace and sample sheet sequencing. Enter the pooled targeted mRNA, TCR, BCR, BD Abseq, and Sample Tag libraries as one sample if libraries were made with the same Library Reverse primer or share the same i7 index.
- Required parameters.

Targeted mRNA, TCR, BCR, and Sample Tag

Parameter	Requirement
Platform	Illumina: 300 cycle kit
Paired-end reads	Minimum of 75 × 225 paired read length
PhiX	Required
Analysis	Contact customer support at scomix@bdscmix.bd.com for access to the latest Rhapsody sequence analysis pipeline with built-in support for VDJ.

BD AbSeq

Parameter	Requirement
Platform	Illumina: 150 cycle kit
Paired-end reads	Minimum of 75 × 75 paired read length
PhiX	Required
Analysis	Contact customer support at scomix@bdscmix.bd.com for access to the latest Rhapsody sequence analysis pipeline with built-in support for VDJ.

Recommendations

Sequencing depth is dependent on application. For cell type clustering, shallow sequencing is sufficient. For in-depth analysis, such as comparison across multiple libraries, deep sequencing is recommended. BD Biosciences recommends meeting the requirement for recursive substitution error correction (RSEC) sequencing depth of ≥ 6 in order to reach the threshold of sequencing saturation where most molecules of the library have been recovered. RSEC sequencing depth is reported by the analysis pipeline. The actual sequencing reads/cell required to achieve this depth can vary, because it depends on the chosen gene panel, number of cells, and sequencing run quality.

Sequencing amount for targeted mRNA and VDJ libraries

This table contains recommended starting points for sequencing amount per cell with primary cells.

Gene panel	Reads/cell	Reads/cell
BD Rhapsody™ Targeted mRNA Panel Hs	~2,000 (for clustering by cell type)	~20,000 (for deep sequencing, RSEC depth ≥ 6)
BD Rhapsody™ TCR	~3,000	N/A
BD Rhapsody™ BCR	~3,000	N/A

Sequencing amount for BD AbSeq libraries

The amount of sequencing needed for BD AbSeq libraries will vary depending on application, BD AbSeq panel plexy, and cell type. BD Biosciences has observed that using 40,000 sequencing reads per cell for 40-plex BD AbSeq libraries prepared from resting PBMCs achieves an RSEC sequencing depth of ~ 2 .

Sequencing amount for Sample Tag libraries

- Pooling samples of the same type: ≥ 120 reads/cell (e.g., combining different donor peripheral blood mononuclear cells)
- Pooling different sample types: ≥ 600 reads/cell (e.g., combining Jurkat cells with peripheral blood mononuclear cells)

NOTE To determine the ratio of BD Rhapsody libraries in order to pool for sequencing, there is a sequencing calculator available. Contact BD Biosciences technical support at scomix@bdscomix.bd.com.

Sequencing flowcell loading and PhiX concentrations

NOTE Sequence the AbSeq libraries separately from the targeted mRNA, TCR, BCR, and Sample Tag libraries.

For library pooling of targeted mRNA, TCR, BCR, and Sample Tag libraries

For a NextSeq High or Mid Output and MiniSeq High or Mid Output runs, load the flow cell at a concentration between 1.8–2.2 pM with 10% PhiX for a sequencing run.

Library	Pooling ratio	Pooling volume (40 µL)
BD Rhapsody targeted mRNA panel	1.5	3
BD Rhapsody Sample Tag	1.0	2
BD Rhapsody TCR	10.5	21
BD Rhapsody BCR	7.0	14

For BD AbSeq library loading

For a NextSeq High or Mid Output and MiniSeq High or Mid Output runs, load the flow cell at a concentration between 1.8–2.2 pM with 20% PhiX for a sequencing run.

